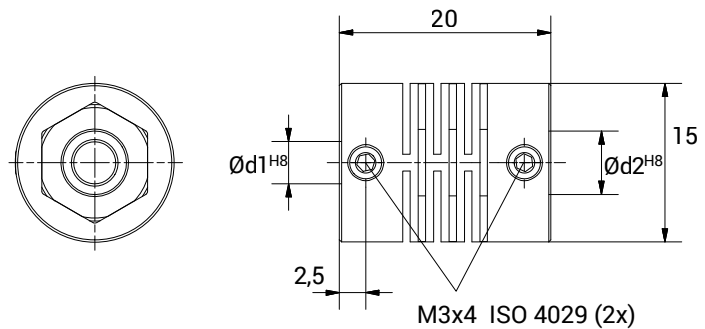


GMPG 1520



CHARACTERISTICS

- Highly cost-effective coupling built using die-casting technique.
- Metal parts fitted into hubs allow for optimal shaft connection.
- Thermally and electrically insulating.



TECHNICAL DATA		
Maximum speed	min ⁻¹	12.000
Maximum torque	Ncm	30
Radial misalignment max.	mm.	± 0,3
Axial misalignment max.	mm.	± 0,2
Angular misalignment max.	degree	± 2,5
Torsional stiffness	Nm/rad	12
Radial stiffness	N/mm	45
Moment of inertia	gcm ²	2
Clamping torque max.	Ncm	70
Working temperature range	°C	-10/+80
Weight	g	6
Hubs material		Brass
Body material		Polyamid 6.6 fiberglass reinforced

DIMENSIONS		
External diameter	Ø	15
Length	mm.	20
Screw position	mm.	2,5
Screw thread		M 3x4
Standard hole combinations d1 H8/ d2 H8	mm.	2/2 - 2/3 - 2/4 - 2/5 - 2/6 - 3/3 3/4 - 3/5 - 3/6 - 4/4 - 4/5 - 4/6 5/5 - 5/6 - 6/6