

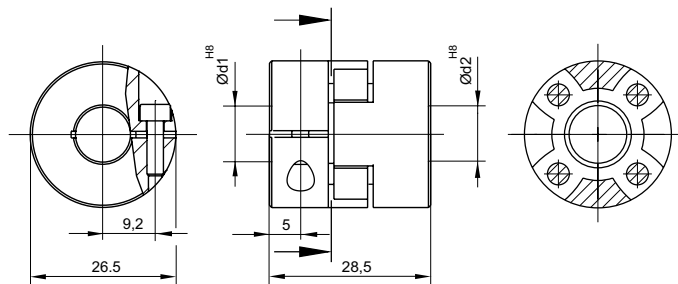
# GTXV 1500



## CHARACTERISTICS



- Coupling is made up of two stainless steel AISI 303 hubs and a damping element, which reduces vibrations, corrects misalignment and reduces noise.
- Jaw couplings are therefore particularly suitable for transmitting high forces.



TECHNICAL DATA				
Hardness of damping element	shore	80 BLUE	92 WHITE	98 RED
Maximum torque	Nm	8	15	25
Maximum speed	min <sup>-1</sup>	19.000		
Radial misalignment max.	mm.	± 0,22		
Axial misalignment max.	mm.	± 1		
Angular misalignment max.	degree	± 1,3		
Angle of twist at Tk <sub>max</sub>	degree	10		
Moment of inertia	gcm <sup>2</sup>	30		
Clamping torque max.	Ncm	120		
Working temperature range	°C	-30 + 80		
Weight	g	88		
Hubs material		Stainless steel AISI 303		
Body material		Polyurethane		

DIMENSIONS		
External diameter	Ø	26,5
Lenght	mm.	28,5
Screw thread		M 3x10
Screw position	mm.	9,2
S	mm.	5
Standard hole combinations d1 H8 / d2 H8	mm.	6/6 - 6/8 - 6/10 - 6/12 - 8/8 - 8/10 8/12 - 10/10 - 10/12 - 12/12