

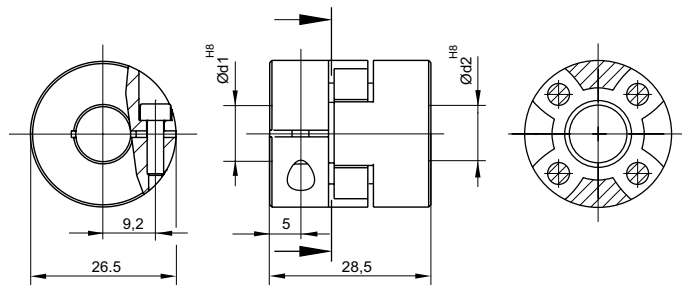
GTXG 1500



CHARACTERISTICS



- Coupling made up of two stainless steel AISI 303 hubs and a damping element, which reduces vibrations, corrects misalignment and reduces noise.
- Screw fixing system.
- The damping element is available in three different shore hardness: BLUE 80 Shore, WHITE 92 Shore and RED 98 shore.



TECHNICAL DATA				
Hardness of damping element	shore	80 BLUE	92 WHITE	98 RED
Maximum torque	Nm	8	15	25
Maximum speed	min ⁻¹	19.000		
Radial misalignment max.	mm.	± 0,22		
Axial misalignment max.	mm.	± 1		
Angular misalignment max.	degree	± 1,3		
Angle of twist at Tk _{max}	degree	10		
Moment of inertia	gcm ²	30		
Clamping torque max.	Ncm	150		
Working temperature range	°C	-30 + 80		
Weight	g	88		
Hubs material		Stainless steel AISI 303		
Body material		Polyurethane		

DIMENSIONS			
External diameter	∅	26,5	
Lenght	mm.	28,5	
Screw position	mm.	5	
Screw thread		M 4x6	
Standard hole combinations d1 H8 / d2 H8	mm.	6/6 - 6/8 - 6/10 - 6/12 - 6/14 - 8/8 8/10 - 8/12 - 8/14 - 10/10 - 10/12 10/14 - 12/12 - 12/14 - 14/14	