

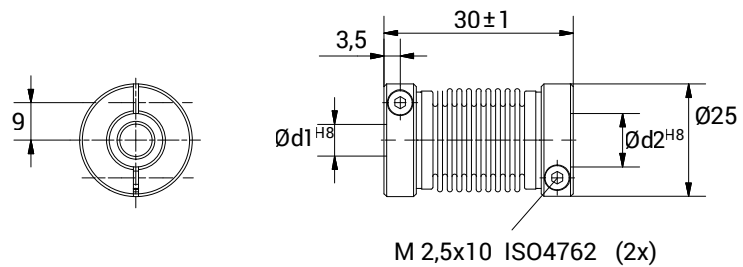
GSXV 2530



CHARACTERISTICS



- Coupling obtained from two anodized aluminium hubs with special steel bellows.
- Unique misalignment correction capacity.
- High torque rigidity.
- Backlash and vibration free.
- Outstanding servo control.
- Clamp fixing system.



TECHNICAL DATA		
Maximum speed	min ⁻¹	10.000
Maximum torque	Nm	2
Radial misalignment max.	mm.	± 0,3
Axial misalignment max.	mm.	± 0,4
Angular misalignment max.	degree	± 4
Torsional stiffness	Nm/rad	220
Radial stiffness	N/mm	45
Moment of inertia	gcm ²	29,8
Clamping torque max.	Ncm	100
Working temperature range	°C	-40/+140
Weight	g	20
Hubs material		Anodised aluminium
Bellow material		Stainless steel

DIMENSIONS		
External diameter	Ø	25
Length	mm.	30
Screw thread		M 2,5x10
Screw position	mm.	3,5
S	mm.	9
Standard hole combinations d1 H8 / d2 H8	mm.	6/6 - 6/8 - 6/9,52 - 6/10 - 6/12 - 8/8 8/9,52 - 8/10 - 8/12 - 9,52/9,52 9,52/10 - 9,52/12 - 10/10 10/12 - 12/12