

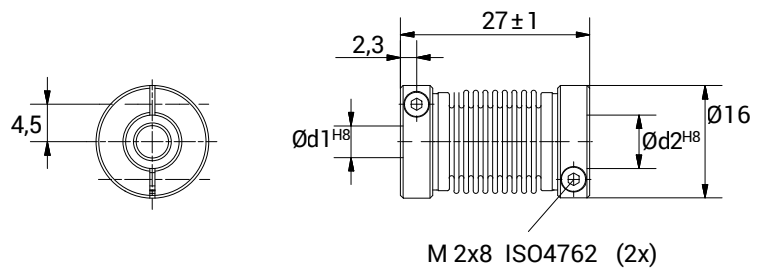
# GSXV 1627



## CHARACTERISTICS



- Coupling obtained from two anodized aluminium hubs with special steel bellows.
- Unique misalignment correction capacity.
- High torque rigidity.
- Backlash and vibration free.
- Outstanding servo control.
- Clamp fixing system.



TECHNICAL DATA		
Maximum speed	min <sup>-1</sup>	10.000
Maximum torque	Ncm	40
Radial misalignment max.	mm.	± 0,3
Axial misalignment max.	mm.	± 0,5
Angular misalignment max.	degree	± 4
Torsional stiffness	Nm/rad	70
Radial stiffness	N/mm	15
Moment of inertia	gcm <sup>2</sup>	2,6
Clamping torque max.	Ncm	50
Working temperature range	°C	-40/+140
Weight	g	7
Hubs material		Anodised aluminium
Bellow material		Stainless steel

DIMENSIONS		
External diameter	Ø	16
Length	mm.	27
Screw thread		M 2x8
Screw position	mm.	2,3
S	mm.	4,5
Standard hole combinations d1 H8 / d2 H8	mm.	2/2 - 2/3 - 2/4 - 2/5 - 2/6 - 2/6,35 - 3/3 3/4 - 3/5 - 3/6 - 3/6,35 - 4/4 - 4/5 4/6 - 4/6,35 - 5/5 - 5/6 - 5/6,35 - 6/6 6/6,35 - 6,35/6,35