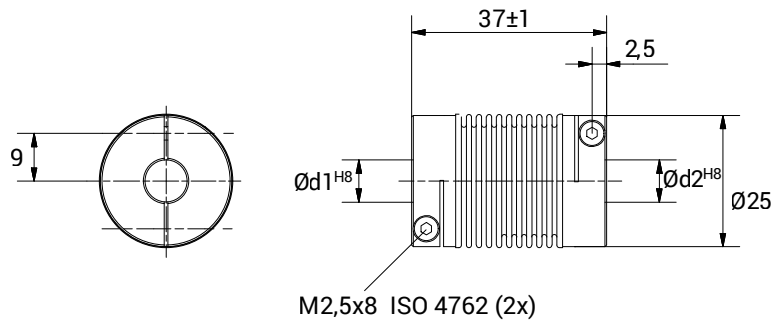


GSNV 2537



CHARACTERISTICS

- Coupling obtained from two anodized aluminium hubs with special nickel bellows.
- Unique misalignment correction capacity; high torque rigidity.
- Backlash and vibration free.
- Outstanding in measuring system.
- Available also in stainless steel version.
- The technical data below applies to uniform stress. Otherwise, please contact our technical department.



TECHNICAL DATA		
Maximum speed	min ⁻¹	10.000
Maximum torque	Ncm	328
Radial misalignment max.	mm.	± 0,46
Axial misalignment max.	mm.	± 2,77
Angular misalignment max.	degree	± 8
Torsional stiffness	Nm/rad	462
Radial stiffness	N/mm	38,1
Moment of inertia	gcm ²	2,54
Clamping torque max.	Ncm	66
Working temperature range	°C	-30/+120
Weight	g	28,5
Hubs material		Anodised aluminium
Bellow material		Nickel

DIMENSIONS		
External diameter	Ø	25
Lenght	mm.	37
Screw thread		M 2,5x8
Screw position	mm.	2,5
S	mm.	9
Standard hole combinations d1 H8/ d2 H8	mm.	6/6 - 6/8 - 6/10 - 6/12 - 8/8 - 8/10 8/12 - 10/10 - 10/12 - 12/12