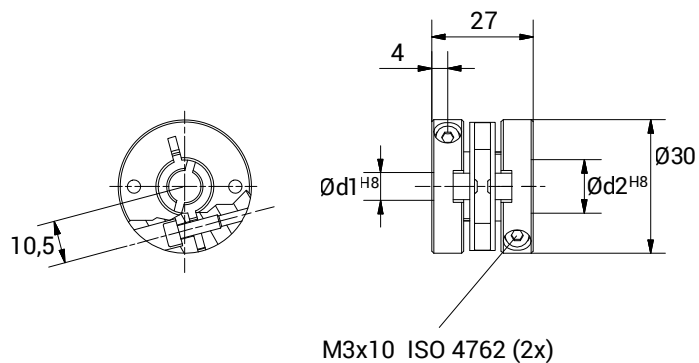


GLPV 3027



CHARACTERISTICS

- Electrically insulating.
- Vibration free.
- High speed permissible.
- High torque rigidity.
- Good misalignment correction.



| TECHNICAL DATA | | |
|---------------------------|-------------------|--------------------------------------|
| Maximum speed | min ⁻¹ | 12.000 |
| Maximum torque | Ncm | 60 |
| Radial misalignment max. | mm. | ± 0,3 |
| Axial misalignment max. | mm. | ± 0,4 |
| Angular misalignment max. | degree | ± 2,5 |
| Torsional stiffness | Nm/rad | 30 |
| Radial stiffness | N/mm | 40 |
| Moment of inertia | gcm ² | 37 |
| Clamping torque max. | Ncm | 120 |
| Working temperature range | °C | -10/+80 |
| Weight | g | 32 |
| Hubs material | | Anodised aluminium |
| Body material | | Polyamid 6.6 fibreglas reinforced |

| DIMENSIONS | | |
|--|-----|--|
| External diameter | Ø | 30 |
| Lenght | mm. | 27 |
| Screw thread | | M 3x10 |
| Screw position | mm. | 4 |
| S | mm. | 10,5 |
| Standard hole combinations d1 H8/ d2 H8 | mm. | 6/6 - 6/8 - 6/10 - 6/12 - 6/14 - 6/16 8/8 - 8/10 - 8/12 - 8/14 - 8/16 - 10/10 10/12 - 10/14 - 10/16 - 12/12 - 12/14 12/16 - 14/14 - 14/16 - 16/16 |