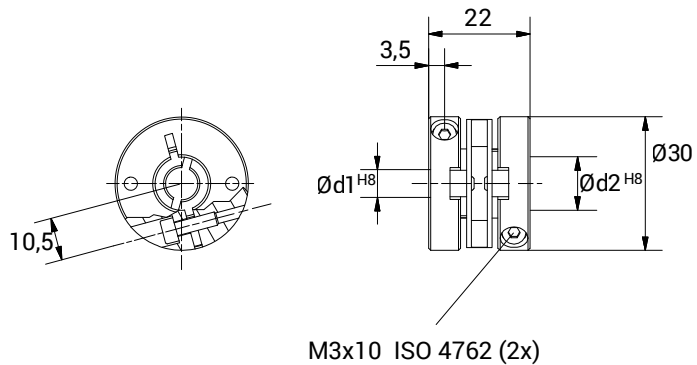


GLPV 3022



CHARACTERISTICS

- Electrically insulating.
- Vibration free.
- High speed permissible.
- High torque rigidity.
- Good misalignment correction.



TECHNICAL DATA		
Maximum speed	min ⁻¹	12.000
Maximum torque	Ncm	60
Radial misalignment max.	mm.	± 0,3
Axial misalignment max.	mm.	± 0,4
Angular misalignment max.	degree	± 2,5
Torsional stiffness	Nm/rad	30
Radial stiffness	N/mm	40
Moment of inertia	gcm ²	35
Clamping torque max.	Ncm	120
Working temperature range	°C	-10/+80
Weight	g	30
Hubs material		Anodised aluminium
Body material		Polyamid 6.6 fibreglas reinforced

DIMENSIONS		
External diameter	Ø	30
Lenght	mm.	22
Screw thread		M 3x10
Screw position	mm.	3,5
S	mm.	10,5
Standard hole combinations d1 H8/ d2 H8	mm.	6/6 - 6/8 - 6/9,52 - 6/10 - 6/12 - 6/14 8/8 - 8/9,52 - 8/10 - 8/12 - 8/14 9,52/9,52 - 9,52/10 - 9,52/12 9,52/14 - 10/10 - 10/12 - 10/14 12/12 - 12/14 - 14/14