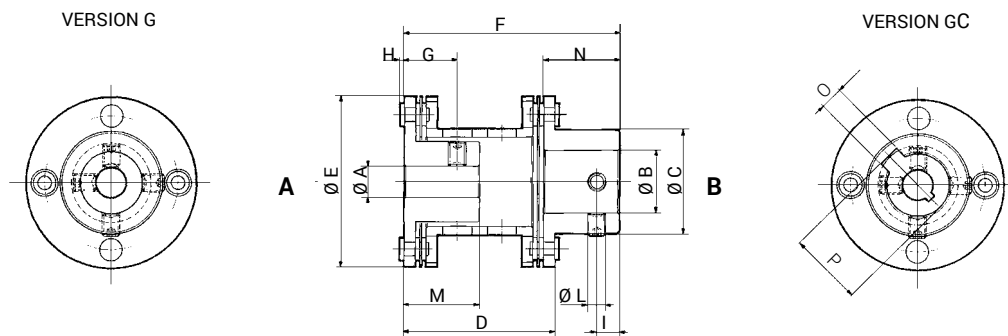


# GEL 5000-C



## CHARACTERISTICS

- The double hubs, one internal and the other external, make it easy to reach the fastening screws.
- A key and screw version is also available.
- They are used to connect tachogenerators, encoders, motors, gauges and for any other application where constant rotational movement in the four quadrants is required and where absolute torque rigidity is needed even when shaft coupling is not perfectly lined up.



TECHNICAL DATA			
Nominal torque	$T_N$	Nm	1,53
Maximum torque	$T_S$	Nm	2,20
Axial misalignment max.	$\Delta W_a$	mm.	0,8
Radial misalignment max.	$\Delta W_r$	mm.	0,7
Angular misalignment	$\Delta W_w$	rad	0,02618
Moment of inertia	J	$\text{Kg m}^2 \times 10^{-6}$	9,001
Maximum speed	n max	$\text{min}^{-1}$	45.000
Dynamic torsional stiffness $\times 10^2$	$C_{w \text{ dym}}$	Nm/rad	24,815
Weight	m	Kg	0,055

STANDARD HOLES											
AH7	BH7	C	D	E	F	G	H	I	L	M	N
3 - 7 - 8 10 - 11	3 - 5 - 6 - 7 8 - 9,52 10 - 11 - 14	23	33,6	38	48,1	12	1	5	M4	17	17

KEYWAY		
H7	O	P
6	2	7
7	2	8
8	3	9
10	3	11,4
11	4	12,8
12	4	13,1
14	5	16,3