

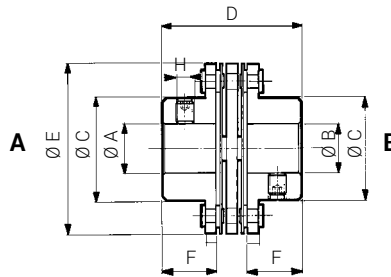
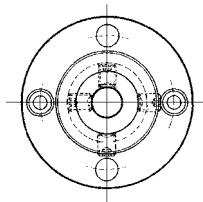
GEL 1000 R-C



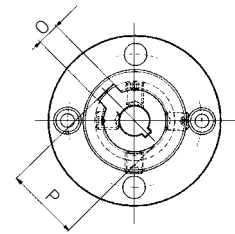
CHARACTERISTICS

- The DIN.AL. fin couplings of the GEL 1000 R series have the connection of the two hubs to a central body of a given size which ensures the same elasticity, yet very small overall dimensions.
- A key and screw version is also available.
- They are used to connect tachogenerators, encoders, motors, gauges and for any other application where constant rotational movement in the four quadrants is required and where absolute torque rigidity is needed even when shaft coupling is not perfectly lined up.

VERSION G



VERSION GC



TECHNICAL DATA			
Nominal torque	T_N	Nm	1,53
Maximum torque	T_S	Nm	2,20
Axial misalignment max.	ΔW_a	mm.	0,4
Radial misalignment max.	ΔW_r	mm.	0,35
Angular misalignment	ΔW_w	rad	0,02618
Moment of inertia	J	$\text{Kg m}^2 \times 10^{-6}$	5,350
Maximum speed	n max	min^{-1}	45.000
Dynamic torsional stiffness $\times 10^2$	$C_{w \text{ dym}}$	Nm/rad	24,815
Weight	m	Kg	0,036

STANDARD HOLES						
AH7	BH7	C	D	E	F	H
3 - 6 - 7 - 8 - 9,52 10 - 11 - 14		23	30,5	38	11,7	M4

KEYWAY		
H7	O	P
6	2	7
7	2	8
8	3	9
10	3	11,4
11	4	12,8
12	4	13,1
14	5	16,3