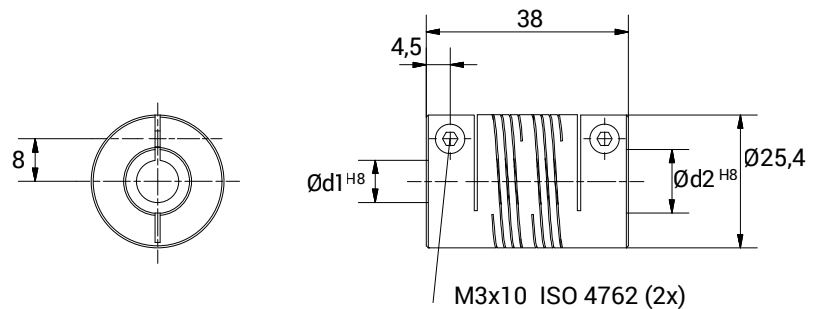


# E6AV 2538



## CHARACTERISTICS

- Coupling obtained from one piece of material with double start.
- Clamp fixing system.
- Suited to countless applications.
- Backlash, vibration and maintenance free.
- Unique misalignment correction.
- High torque rigidity.
- High maximum torque.



TECHNICAL DATA		
Maximum speed	min <sup>-1</sup>	5.000
Maximum torque	Nm	10
Radial misalignment max.	mm.	0,37
Axial misalignment max.	mm.	± 0,25
Angular misalignment max.	degree	± 7
Torsional stiffness	Nm/rad	70
Radial stiffness	N/mm	80
Moment of inertia	gcm <sup>2</sup>	33
Clamping torque max.	Ncm	80
Working temperature range	°C	-40/+140
Weight	g	33
Material		Aluminium

DIMENSIONS		
External diameter	Ø	25,4
Length	mm.	38
Screw thread		M 3x10
Screw position	mm.	4,5
S	mm.	8
Standard hole combinations d1 H8 / d2 H8	mm.	8/8 - 8/9,52 - 8/10 - 8/12 9,52/9,52 - 9,52/10 - 9,52/12 10/10 - 10/12 - 12/12