

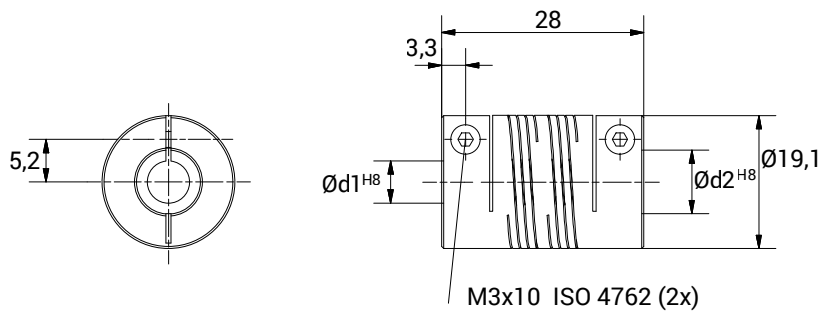
E6AV 1928



CHARACTERISTICS



- Coupling obtained from one piece of material with double start.
- Clamp fixing system.
- Suited to countless applications.
- Backlash, vibration and maintenance free.
- Unique misalignment correction.
- High torque rigidity.
- High maximum torque.



TECHNICAL DATA		
Maximum speed	min ⁻¹	5.000
Maximum torque	Nm	4
Radial misalignment max.	mm.	± 0,25
Axial misalignment max.	mm.	± 0,25
Angular misalignment max.	degree	± 7
Torsional stiffness	Nm/rad	40
Radial stiffness	N/mm	50
Moment of inertia	gcm ²	7
Clamping torque max.	Ncm	40
Working temperature range	°C	-40/+140
Weight	g	12
Material		Aluminium

DIMENSIONS		
External diameter	Ø	19,1
Length	mm.	28
Screw thread		M 3x10
Screw position	mm.	3,3
S	mm.	5,2
Standard hole combinations d1 H8 / d2 H8	mm.	6/6 - 6/6,35 - 6,35/6,35